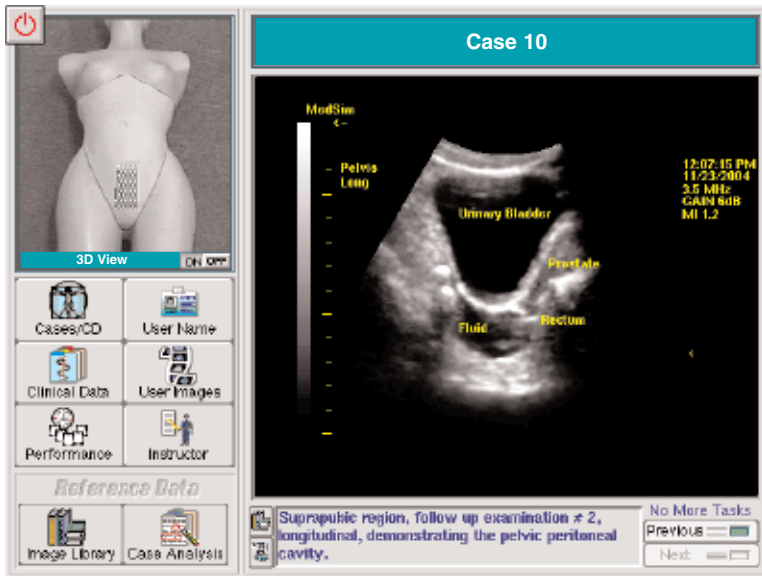


EMERGENCY MEDICINE SERIES

Full Screen Image Showing User Interface and Fluid in Rectovesical Pouch



MODULE 1 - FAST

FAST Module - This Emergency Medicine Module is the first in a series of four, which incorporates MedSim's Multi-Volume loading functionality.

Multi-Volume loads multiple ultrasound data volumes for each case, providing expanded presentation of the anatomy.

This new functionality enhances the ability to conduct more complete examinations and improves the educational experience.

The FAST Module consists of 2 CDs.

The first CD contains 10 cases each providing sequential scanning of the following four areas:

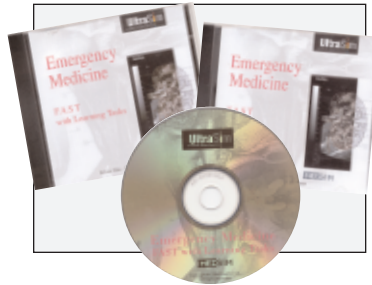
- Epigastrium
- Right Upper Quadrant
- Left Upper Quadrant
- Pelvis

Each case simulates a complete clinical experience including Patient History and Physical Examination Data.

The second CD contains additional learning tasks which require the user to scan potential fluid collection areas.

Included in this CD are Reference Images with Annotations, Sonographic Summaries and Discussions prepared by experts in the field.

FAST Module CDs



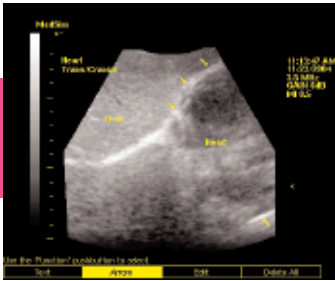
Requires MedSim 3.5MHz Transducer



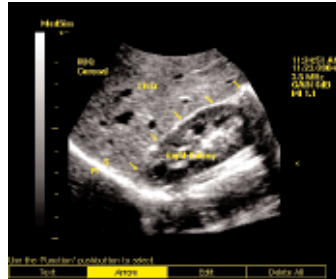
Requires Full Torso Mannequin



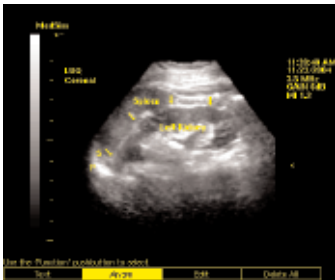
EMERGENCY MEDICINE SERIES



Normal Pericardium



Normal Right Upper Quadrant



Normal Left Upper Quadrant



Fluid in Morrison's Pouch



Fluid in Perisplenic and Pleural Spaces



Normal Pouch of Douglas

MODULE 1 - FAST

Examples of available cases:

- Negative FAST
- Small Amount of Fluid in Morrison's Pouch
- Moderate Amount of Fluid in the Left Chest and Perisplenic Space
- Small Amount of Pericardial Fluid
- Small-to-Moderate Amount of Fluid throughout the Abdomen and Right Chest
- Large Amount of Fluid in the Abdomen and Chest
- Small to Moderate Amount of Fluid in the Pelvis and RUQ
- Fluid in the Pelvis, LUQ and Morrison's Pouch
- Increasing Amount of Fluid in the Rectovesical Pouch on repeated FAST Exams

MEDSIM
REALITY IN ULTRASOUND SIMULATION