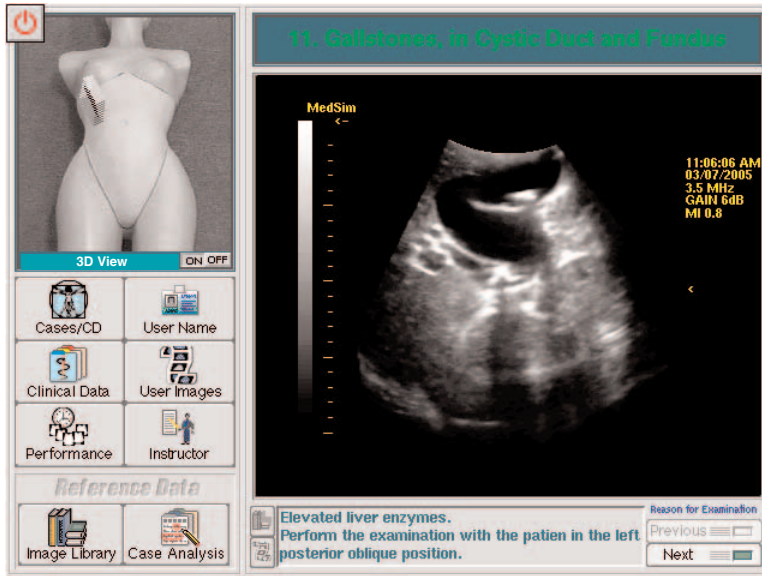


# EMERGENCY MEDICINE SERIES

## MODULE 2 - BILIARY

*Full Screen Image Showing User Interface and Gallstones in Cystic Duct and Fundus*



**BILIARY Module** - is the second module in our Emergency Medicine Series.

This module consists of 1 CD containing 24 cases suitable for both introductory and experienced users.

The Biliary Module demonstrates normal anatomy and normal variants as well as common biliary tree abnormalities.

Some examples of these findings are:

- Gallstones
- Gallbladder Sludge
- Acute Cholecystitis
- Abnormal Size of the Common Bile Duct

*Biliary Module CD*



*Requires Mock Curved Transducer*



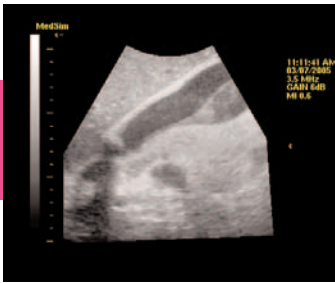
*Requires Full Torso Mannequin*



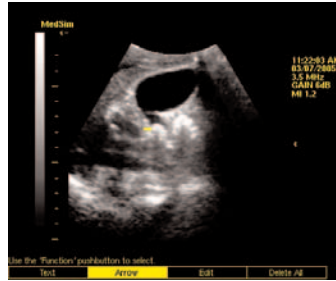
Each case simulates a complete clinical experience including Patient History, Physical Examination Data, Learning Tasks and Educational Information.

Included in this CD are Reference Images with Annotations, Transducer Orientation, Sonographic Summaries and Discussions prepared by experts in the field.

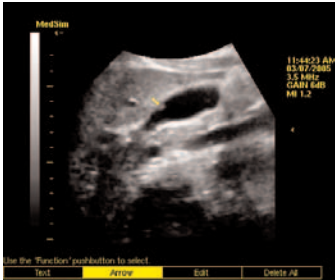
# EMERGENCY MEDICINE SERIES



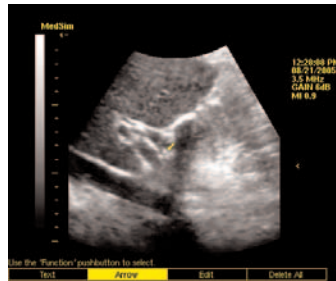
Gallbladder Emphyema



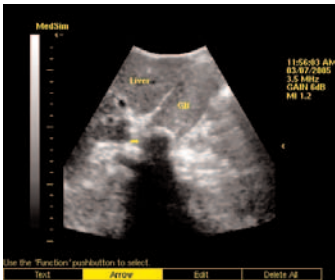
Stone in Gallbladder Neck



Small Anterior Wall Polyp



Stone in Dilated Common Bile Duct



Cholecystitis; Impacted Stone



Biliary Air

## MODULE 2 - BILIARY

*Examples of available cases:*

- Normal Gallbladder and Biliary Tree
- Gallbladder with Cholesterol Crystals
- Gallbladder Emphyema
- Stone in Neck of Gallbladder
- Polyp and Gallbladder Septation
- Gallstones
- Dilated Common Bile Duct
- Cholelithiasis, Liver Metastases

**MEDSIM**  
REALITY IN ULTRASOUND SIMULATION