

# ABDOMEN SERIES

## MODULE 3 - Urinary Tract

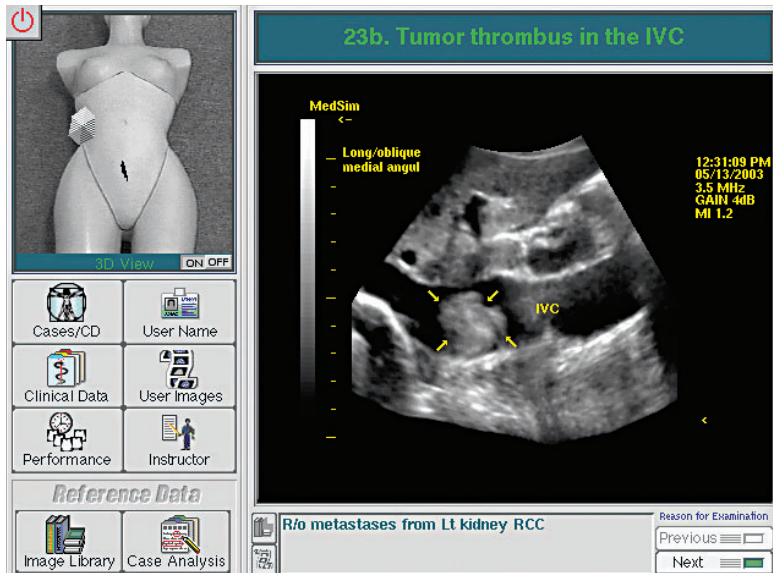
*Abdomen Module 3 - Urinary Tract* - an extension of the popular Abdominal Module Series, Module 3 focuses on the lower pelvis allowing UltraSim users to conduct simulated focused examinations on the kidneys, bladder and ureters.

Module 3 includes thirty-one clinical cases covering a wide range of normals and pathologic conditions. The diverse portfolio of cases such as Renal Abscess, UVJ Stone, Bladder Carcinoma, Tumor Thrombus in IVC, are designed to teach lower abdominal anatomy identification and pathologic conditions. The Module is appropriate for introductory and experienced users.

As with other Modules, Abdomen Module 3 cases include case specific protocols, educational tasks, individual patient/clinical histories and reference images.

This module requires the MedSim full torso mannequin and curved transducer.

*Full Screen Image Showing User Interface and Tumor Thrombus in IVC*



*Abdomen Module 3 CD's*

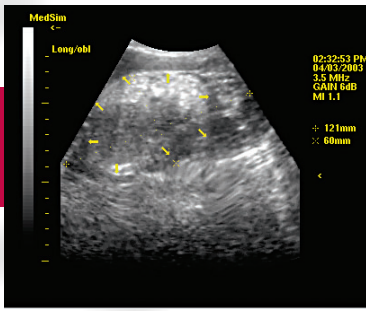


*Requires Mock Curved Transducer*

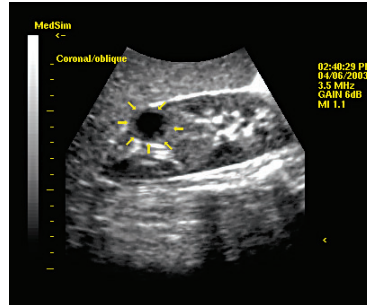


*Requires Full Torso Mannequin*

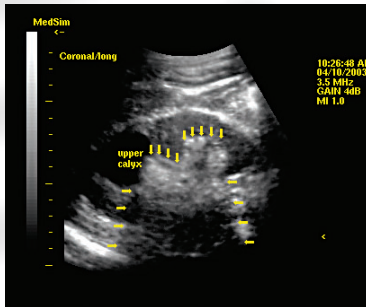




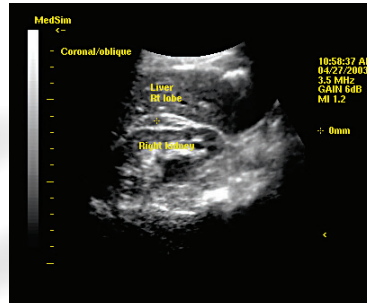
Hemorrhagic Angiomyolipoma



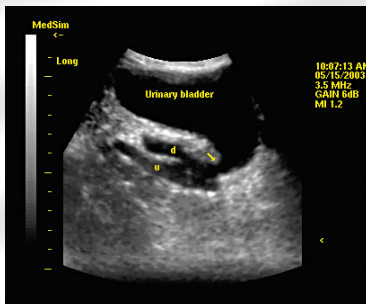
Renal Abscess



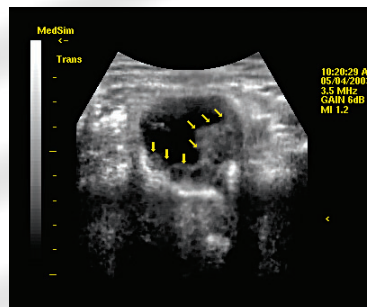
Staghorn Calculus



Perirenal Hematoma



Hutch Diverticulum



Invasive Bladder TCC

# ABDOMEN SERIES

## MODULE 3 - Urinary Tract

*Examples of cases which are included in this module:*

### CD 1-Renal Pathology

- Malrotated Kidney
- Kidney Stones
- Hemorrhagic Angiomyolipoma
- Acute Pyelonephritis
- Renal Abscess
- Perirenal Hematoma
- Nephrocalcinosis
- Staghorn Calculus
- UPJ Stone
- Hydronephrosis with Stones

### CD 2-Bladder Pathology

- Large Prostate
- Bladder Diverticulum and Stone
- Bladder Carcinoma
- UVJ Stone
- Bladder Carcinoma, Hutch Diverticulum

### CD 3-Combined Cases

- Pelvic Lymphosarcoma with Hydronephrosis
- Invasive Bladder TCC with Hydronephrosis
- Adrenal Metastasis from RCC
- Tumor Thrombus in IVC
- Dilated Upper Moiety with Ureterocele

