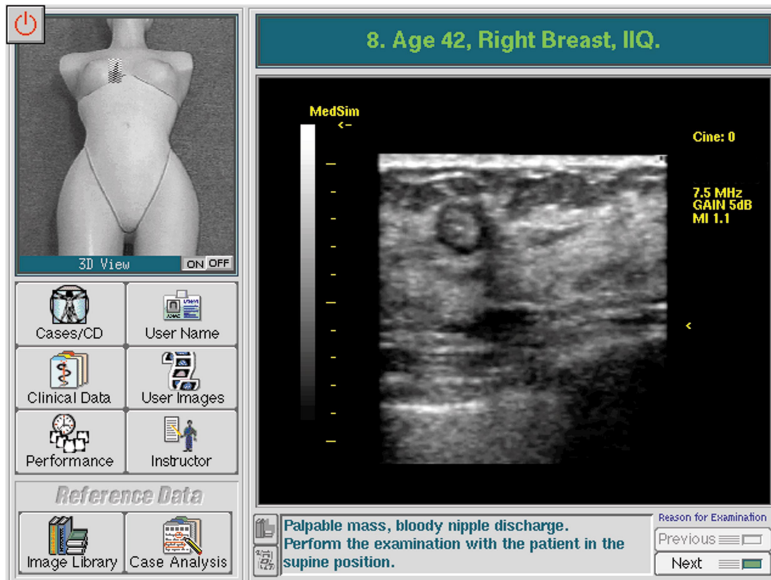


BREAST SERIES

MODULE 1

Full Screen Image Showing User Interface and Intramammary Lymph Node



Breast Module 1 CD's



*Breast Module 1
Instructor Manuals*



*Requires Mock 7.5 MHz
Linear Transducer*

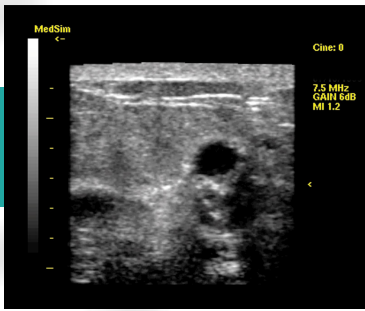


*Requires Full
Torso Mannequin*

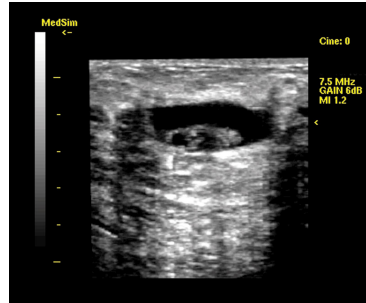


Breast Imaging Module 1 - is the premiere module for the UltraSim® Breast Imaging Series. This first module allows UltraSim® users to develop, enhance and evaluate their breast imaging and interpretation skills. The module focuses on the user's ability to practice various scanning techniques, demonstrate normal and abnormal breast tissue, and understand pattern recognition commonly encountered in breast disease. Proper system operation utilizing gain, TGC, depth and focal zones is emphasized to maximize the user's ability to obtain optimal images for diagnosis.

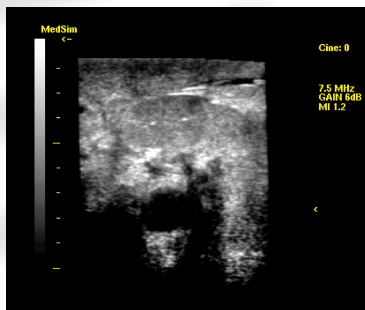
Breast Module 1 consists of a collection of 30 cases, ranging from normal breast tissue to commonly encountered pathologies. Each case simulates a complete clinical experience, with a patient clinical history and case-specific real-patient ultrasound data. An integral part of each case is the comprehensive educational package, which includes task oriented exam protocols, reference images, and a thorough case analysis. Accompanying this module is an instructor's manual, which contains user worksheets and suggested curricula. Combined, this module creates a unified approach to teaching and learning breast scanning and interpretive skills. Participants may either use the UltraSim® in conjunction with professional didactic presentations or independently to practice learned skills. In addition, because case presentation on the UltraSim® is both controlled and repeatable, it is an ideal system for skills assessment and competency evaluation.



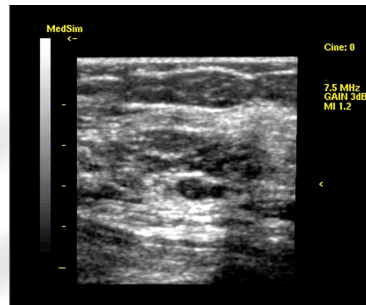
Invasive Ductal Carcinoma



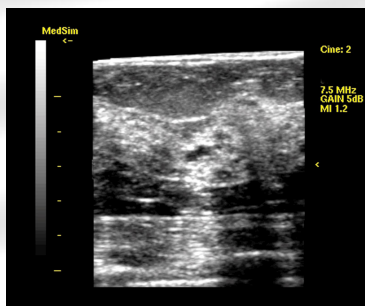
Infected Hematoma



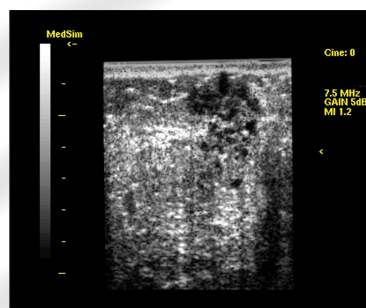
Ductal Carcinoma



Fibroadenoma



Benign Cysts



Mastitis

BREAST SERIES

M O D U L E 1

Examples of cases which are included in this module:

- Late Stage Infiltrative Carcinoma
- Ductal Carcinoma
- Infected Hematoma
- Fibroadenoma
- Intramammary Lymph Node
- Mastitis
- Post Aspiration Cysts
- Simple Cysts
- Complex Cysts
- Papilloma
- Benign Calcifications
- Fat Lobule