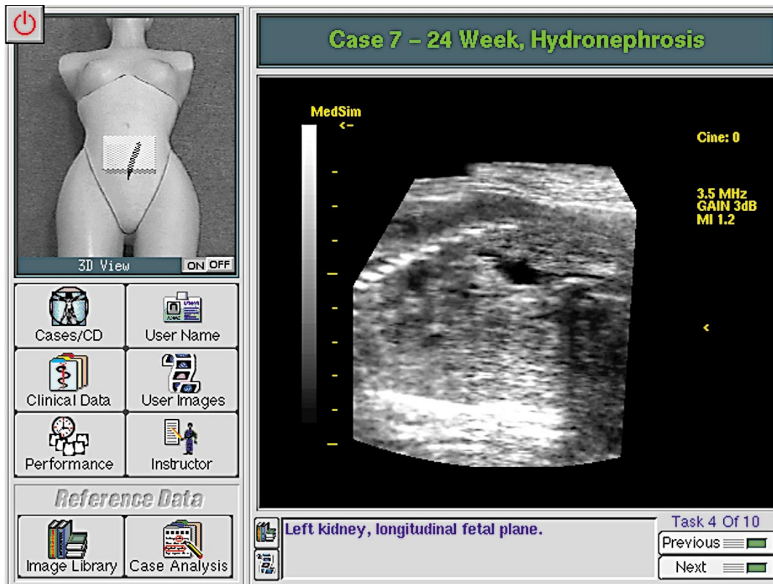


# OBSTETRICS SERIES

*Full Screen Image Showing User Interface and Case Demonstrating Hydronephrosis*



## MODULE 2 - Interpretation

*Obstetric Module 2 - Interpretation Cases* - This module takes a fresh approach to simulation-based interactive learning. Intended for users of MedSim's UltraSim® who have previous clinical obstetric ultrasound experience, it was designed to help hone critical thinking in case interpretation and provide significant exposure to common sonographic imaging pitfalls and how to avoid them. Obstetric Module 2 reinforces interpretation and image acquisition skills in a safe, patient-free learning environment. As with all UltraSim® modules, users have access to a full range of system controls including acoustic power, gain, TCG, and depth.

This Module contains 10 unique and challenging cases. Each case conforms to a common scenario: a patient has arrived at the user's clinic carrying a sonographic report from a previous examination. This report includes findings, clinical data, and a set of ultrasound images. The report may have a number of significant errors in it, including errors in findings or measurements, technical imaging errors, missing images, etc. The user must evaluate the patient and the report. If the user is not satisfied with the quality of the report, the user may scan the case and complete the interpretation based on the additional findings. Each case includes a comprehensive educational package which features reference images, accurate findings, differential diagnosis, case discussion and technical pitfalls.

*Obstetrics Module 2 Interpretation CD*



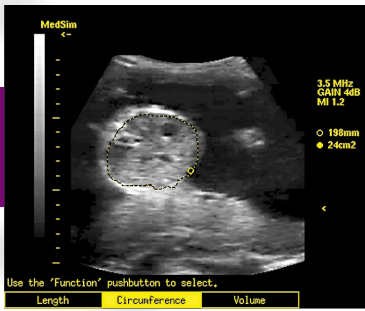
*Requires Mock 3.5 MHz Curved Transducer*



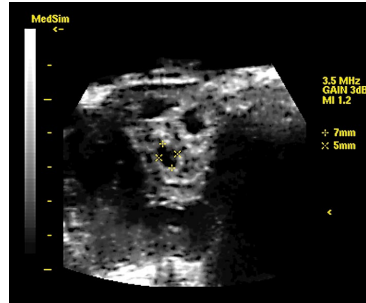
*Requires Full Torso Mannequin*



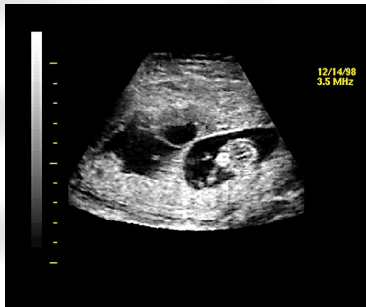
# OBSTETRICS SERIES



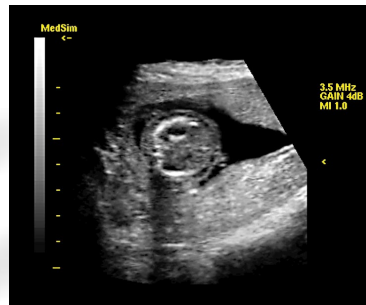
Abdominal, Circumference -  
Correct or Incorrect



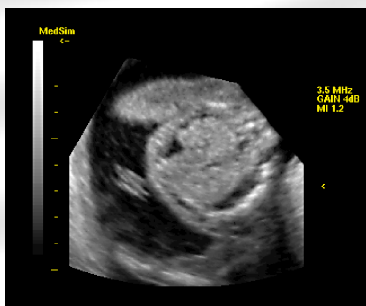
Confirm Normal Triplets



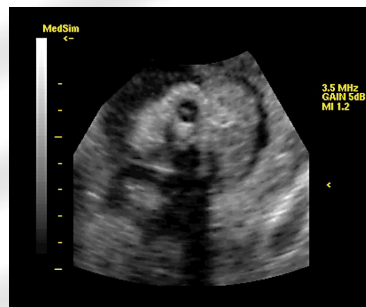
Confirm Abnormal Triplets



Rule Out Cystic Hygroma



Confirm Hydrops



Evaluate Fetal Head

## MODULE 2 - Interpretation

### *Examples of Available Cases:*

- 27 Week, Spina Bifida
- 24 Week, Normal Pregnancy,
- 12 Week, Normal Pregnancy
- 15 Week, Myoma, Subchorionic Lucency
- 14 Week, Septated Mass
- 6 Week, Normal Triplet Pregnancy
- 24 Week, Hydronephrosis
- 12 Week, Abnormal Triplet Pregnancy
- 20 Week, Hydrops
- 12 Week, Spina Bifida

MedSim is accredited by the Accreditation Council for Continuing Medical Education to provide continuing medical education for physicians. MedSim takes responsibility for the content, quality, and scientific integrity of this CME activity.

MedSim designates this educational activity for a maximum of 5 credit hours in Category 1 credit towards the AMA Physicians Recognition Award. Each physician should claim only those hours of credit that he or she actually spent in the educational activity.

**MEDSIM**  
REALITY IN ULTRASOUND SIMULATION